

# Elective Counseling

Immersion Phase Introduction for Class of 2025

## Phase Directors

Kim Dahlman, PhD

Kendra Parekh, MD, MHPE

## Program Manager

Brenna Hansen

## Program Coordinator

LaToya Ford

## Program Coordinator

Baillie Woodward

<https://medschool.vanderbilt.edu/ume/IP>

Email: [immersion.phase@vanderbilt.edu](mailto:immersion.phase@vanderbilt.edu)



School of Medicine

# Elective Counseling Resources

<https://medschool.vanderbilt.edu/md-gateway/elective-counseling-overview/>

## MD Gateway

### Elective Counseling Overview

#### Immersion Phase Elective Counseling Overview

Immersion Phase Elective Counseling is a joint effort between Medical Student Affairs, Careers in Medicine, the Immersion Phase Team, College Mentors, and the Faculty Specialty Advisors designed to support students in planning and managing their Immersion Phase schedules to ensure timely achievement of graduation requirements and preparation for post-graduation plans.

In need of individual elective counseling? Please [let us know](#) so we can schedule a one-on-one session with you!

#### Elective Counseling

Elective Counseling:  
Immersion Phase  
Requirements

Elective Counseling:  
Documents

Elective Counseling:  
Presentations

Elective Counseling Overview



School of Medicine

# Session Goals

- Describe the overarching goals and course types in the Immersion Phase
- Discuss Immersion Phase curricular requirements
- Discuss Research, LC and FHD requirements
- Discuss the upcoming registration timeline and provide counseling on your elective choices



# Curriculum 2.0: Immersion Phase

A highly individualized post-clerkship phase that uses clinical context to build upon prior learning

## Advanced Clinical Experiences

rigorous clinical rotations

## Integrated Science Courses

mixed didactic and clinical experiences

## Acting Internships

supervised intern-level responsibilities

## Research

mentored research project

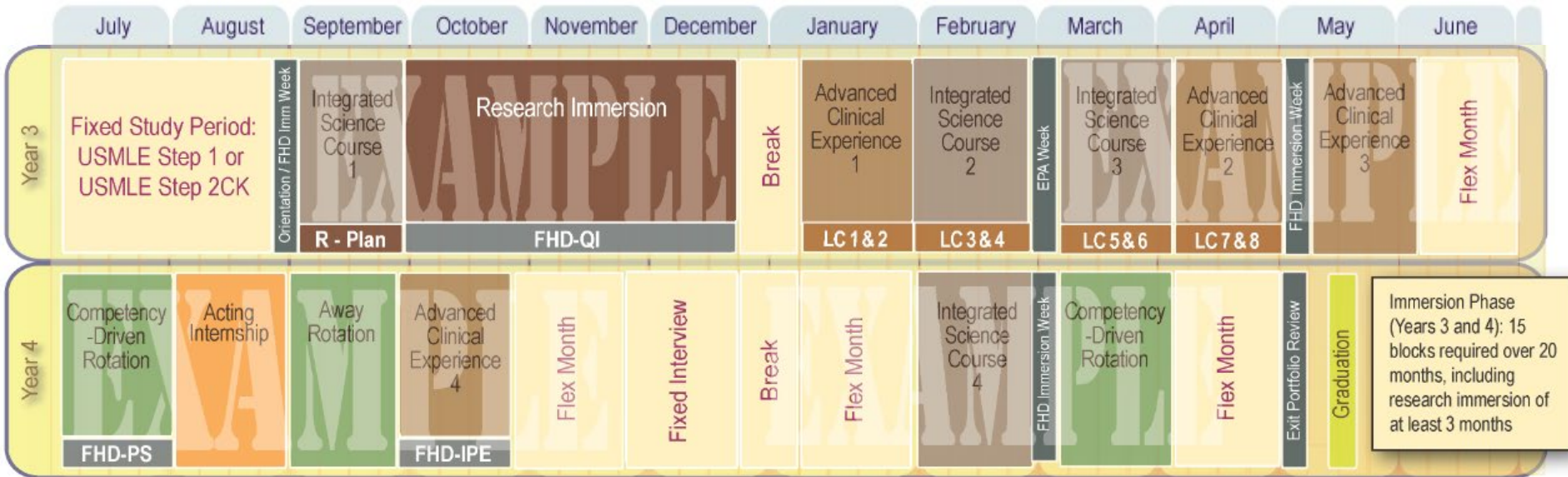


## IMMERSION PHASE GOALS

- Deepen **FOUNDATIONAL SCIENCE KNOWLEDGE** during meaningful clinical engagement
- Solidify **CLINICAL SKILLS**
- Enhance **PRACTICE-BASED LEARNING SKILLS**
- Ensure readiness for **INTERN ROLE/RESIDENCY**
- Expand knowledge and skills regarding **SCHOLARSHIP**
- Further grow knowledge and skills regarding **LEADERSHIP**
- Encourage **PROFESSIONAL DEVELOPMENT**



# VUSM Curriculum 2.0



## Immersion Weeks are Mandatory

### Year 3:

Aug. 21-25, 2023 — Immersion Orientation (Monday), FHD (Tue-Fri)

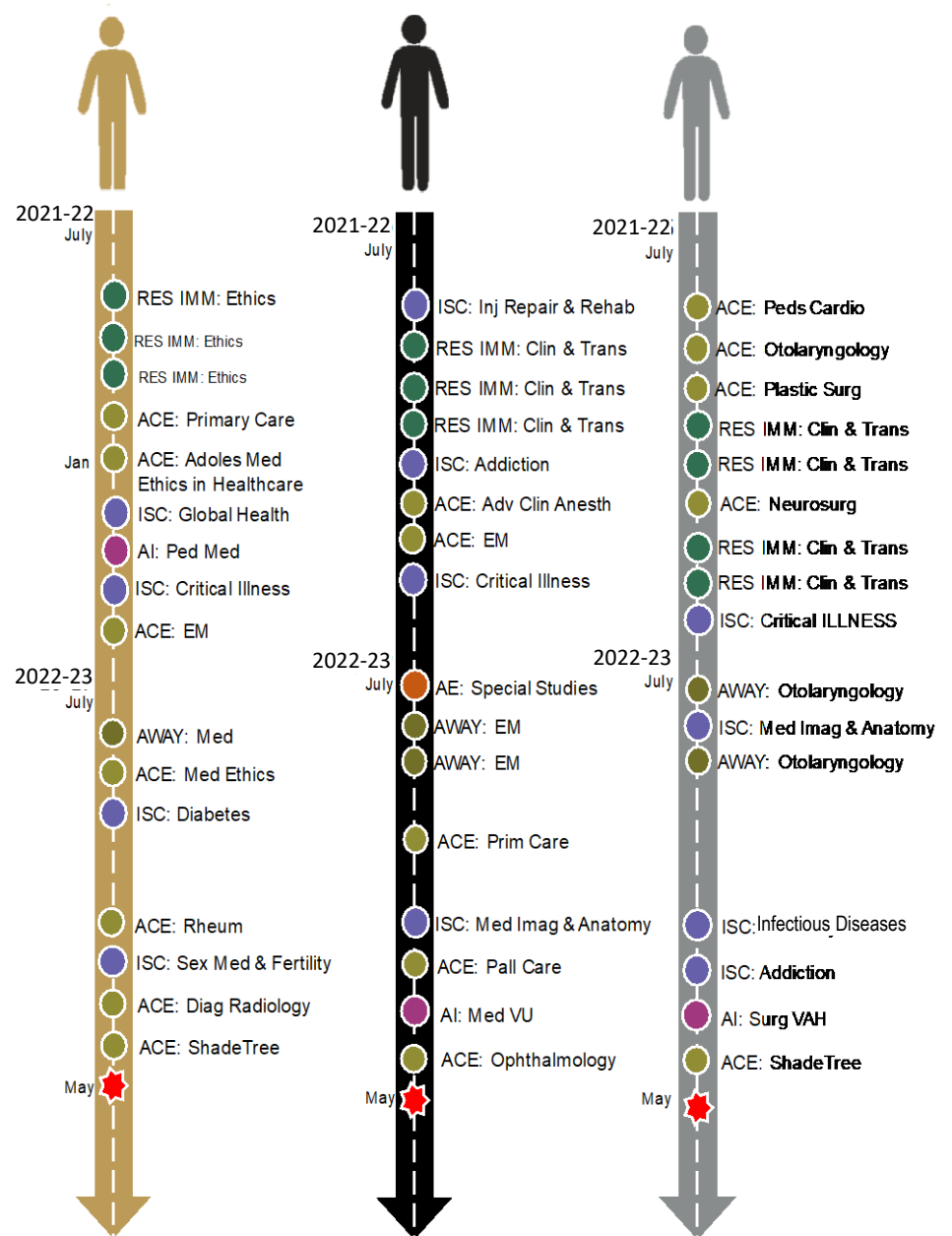
Feb. 26-March 1, 2024 — Intro to Core EPAs

April 29-May 3, 2024 — FHD: AC2 and IPE1

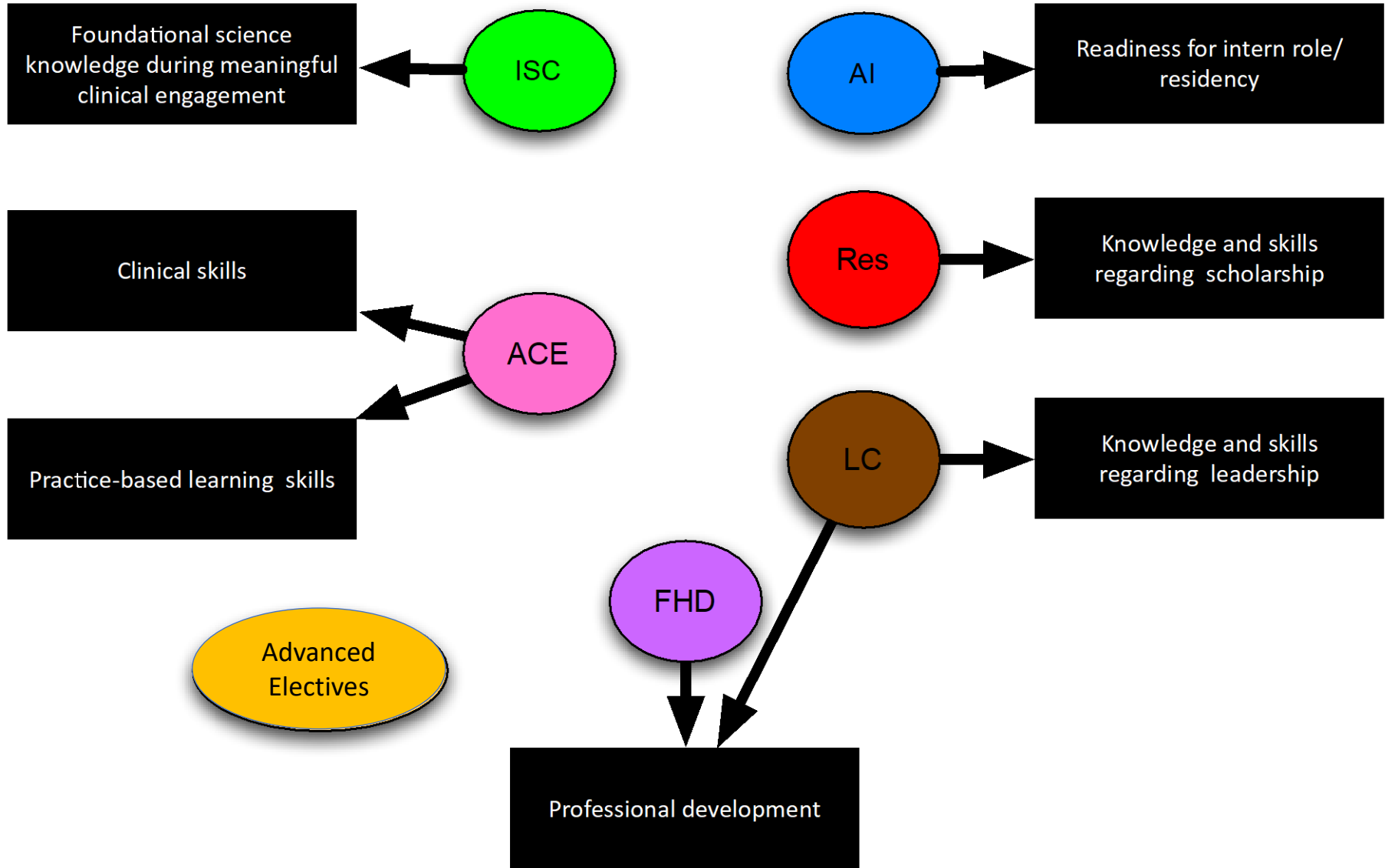
**Do not submit abstracts to meetings  
that occur during mandatory Immersion Weeks**



# Individualization

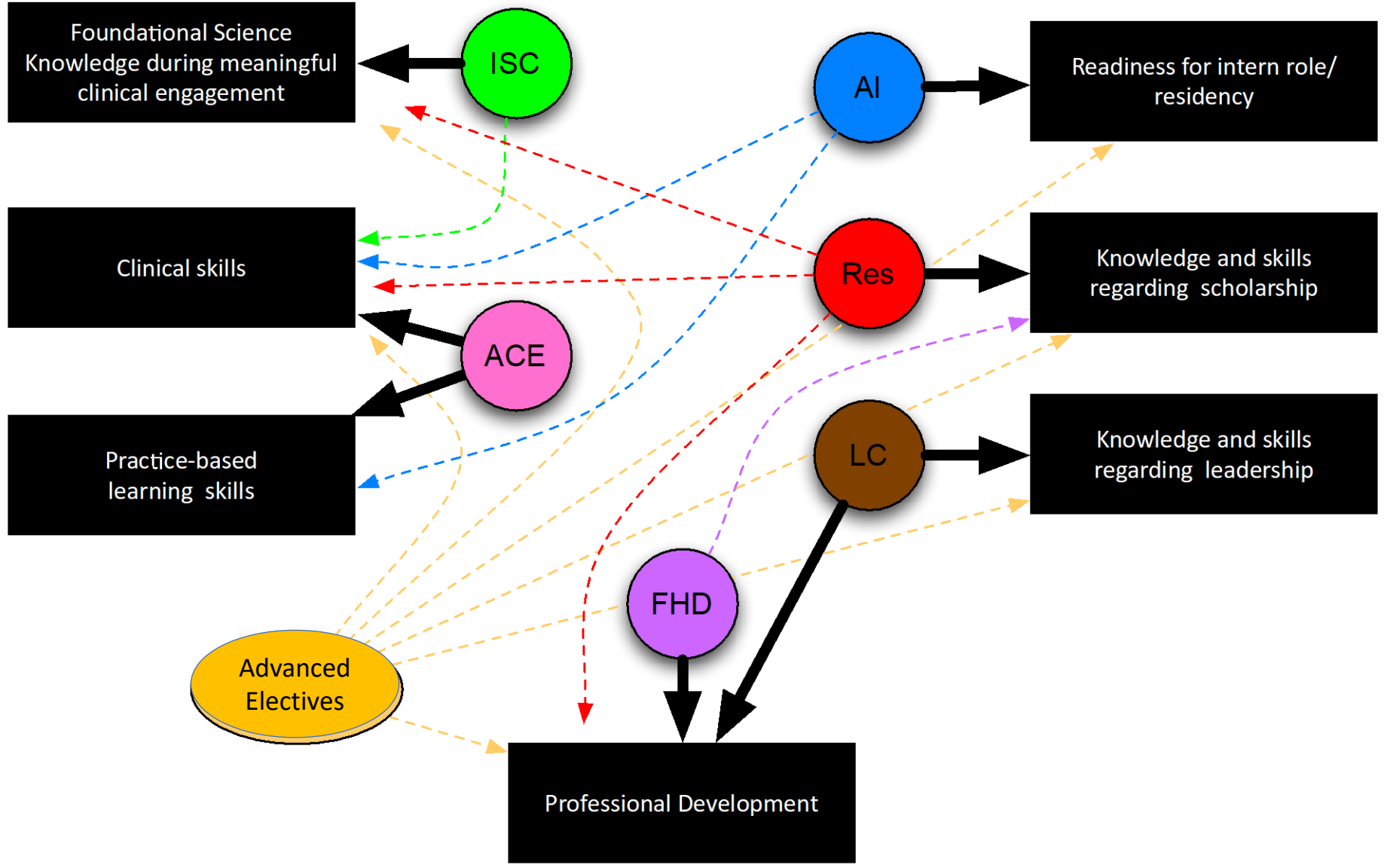


# Courses Designed to Meet Phase Goals





# Courses Designed to Meet Phase Goals





# C 2.0 Immersion Phase: Course Types

**ACE: Advanced Clinical Experience**

- Rigorous clinical experience

**ISC: Integrated Science Course**

- Didactic and clinical experiences

**AI: Acting Internship**

- Supervised intern-level responsibilities

**AE: Advanced Elective**

- Competency- or interest-driven
- Usually non-clinical setting

**Special Studies**

- Competency- or interest-driven rotation
- Tailored course
- NOT in the catalog



# Advanced Clinical Experiences (ACE)

- 4-week clinical rotations designed to develop clinical and practice-based learning skills
- Set of common learning objectives for all ACEs
- The **final grade is assigned on an H/HP/P/F** basis based on milestones and comments



# Integrated Science Courses (ISC)



- 4-week rotation designed to reinforce and advance the foundational sciences\* underlying clinical medicine
- Innovative mixed didactic/clinical design with multiple learning activities (CELA, CBL, TBL, lectures, conferences, community clinics, etc.)
- Set of common learning objectives for all ISCs
- The **final grade is assigned on an H/HP/P/F** basis based on quantitative scores, milestones, and comments.

*\*traditional pre-clinical sciences as well as social and behavioral sciences, health services and population science, systems science, quantitative methods and informatics.*



# Integrated Science Courses

- 1) Cardiovascular Diseases
- 2) Clinical Cancer Medicine
- 3) Clinical Informatics
- 4) Community Health
- 5) Critical Illness
- 6) Diabetes Mellitus
- 7) Emergency Care
- 8) Global Health\*
- 9) Healthy Aging and Quality Dying
- 10) High-Value Care
- 11) How Doctors Think
- 12) Infectious Diseases
- 13) Injury, Repair, and Rehabilitation
- 14) Medical Imaging and Anatomy
- 15) A National Crisis: Opioids, Pain, Addiction and Policy
- 16) Sexual Medicine and Reproduction
- 17) The Skinny on Obesity

~50% of total  
spots held for  
your cohort

*\*Global Health will continue as long as  
international travel is allowed*



# ISC Registration

- Plan to register for at least 2 and no more than 3 during initial registration
- ISC spots are not held 50/50 in each month, but over the full year
  - Example: VMS4s cannot take April ISCs



# Acting Internships (AI)

- A 4-week intensive, inpatient experience designed to provide supervised intern-level responsibilities.
- All time devoted to this rotation; no longitudinal units (PLAN, FHD, or LC) can be paired with an AI.
- **Final grade will be assigned as H/HP/P/F** based on milestones, Entrustable Professional Activities (EPAs), and comments.





# Acting Internships (AI)

- If you need to complete an AI before residency applications: AIs offered March to September
- If you DO NOT need to complete an AI before residency applications: AIs February and March of Y4
- **Initial AI enrollment is NOT through YES.**
  - In November/December, we will have an AI Counseling Session to learn about the options and the process for enrollment.

# Advanced Electives (AE)

- 4-week courses that are typically “classroom”-based (most do not count for clinical credit)
- These courses meet the competency- and interest-driven requirement
- Final grade will be assigned as **P/F**

AE: Career Exploration
AE: Contagion of Distress
AE: Ecology and Health
AE: Ethics in Health Care
AE: Global Health
AE: Leadership in Medicine
AE: Med School 101
AE: Preparation for Surgical Internship
AE: Students as Teachers ( <i>registration is off-cycle and will occur in winter of 2024</i> )
AE: Transition to Residency and Internship
AE: WikiMed





# Special Studies

- Courses that are uniquely designed by the student **in collaboration with Vanderbilt faculty AND** not in the current course catalog
- To receive credit, course must be:
  - Requested at least 28-days in advance
  - 4-weeks long (128 hours minimum)
  - Have learning objectives with multiple assessment modalities
- Fulfill a “competency/interest-driven” requirement





# Special Studies

- Final grade will be assigned as **P/F**  
(Exception—7100 AWAY Clinical Rotations may be graded as H/HP/P/F)
- Enrollment will explain the process for petition and review at orientation in August

Form #	Course
Form 6100	Petition for Clinical Special Study (at VUSM)
Form 6200	Petition for Non-Clinical Special Study
Form 6150	Petition for Research Special Study (at VUSM)
Form 7100	Petition for Clinical Rotation (Away)
Form 7150	Petition for Research Special Study (Away)



# C 2.0 Immersion Phase Requirements (traditional)

Minimum C2.0 Requirements (in Months)		
On-Campus	4	Integrated Science Courses (ISCs)
	1	Acting Internship (AI)
	4	Advanced Clinical Electives (ACEs)
On-Campus or Away (away with approval*)	3	Research Immersion
	3	Competency and Interest-Driven Rotations <sup>#</sup> (can be ISCs, ACEs, AIs or AEs)
15 required months		Must include: 1 Primary Care course 1 Acute Care course (EM or ICU-based course)
7 Flex months		2 months for Step Study + 1 month for interviews + 4 flex months

<https://medschool.vanderbilt.edu/md-gateway/elective-counseling-imm-reqs/>

ISC, ACE, and AI grading = H/HP/P/F

Students can register for up to 19 months

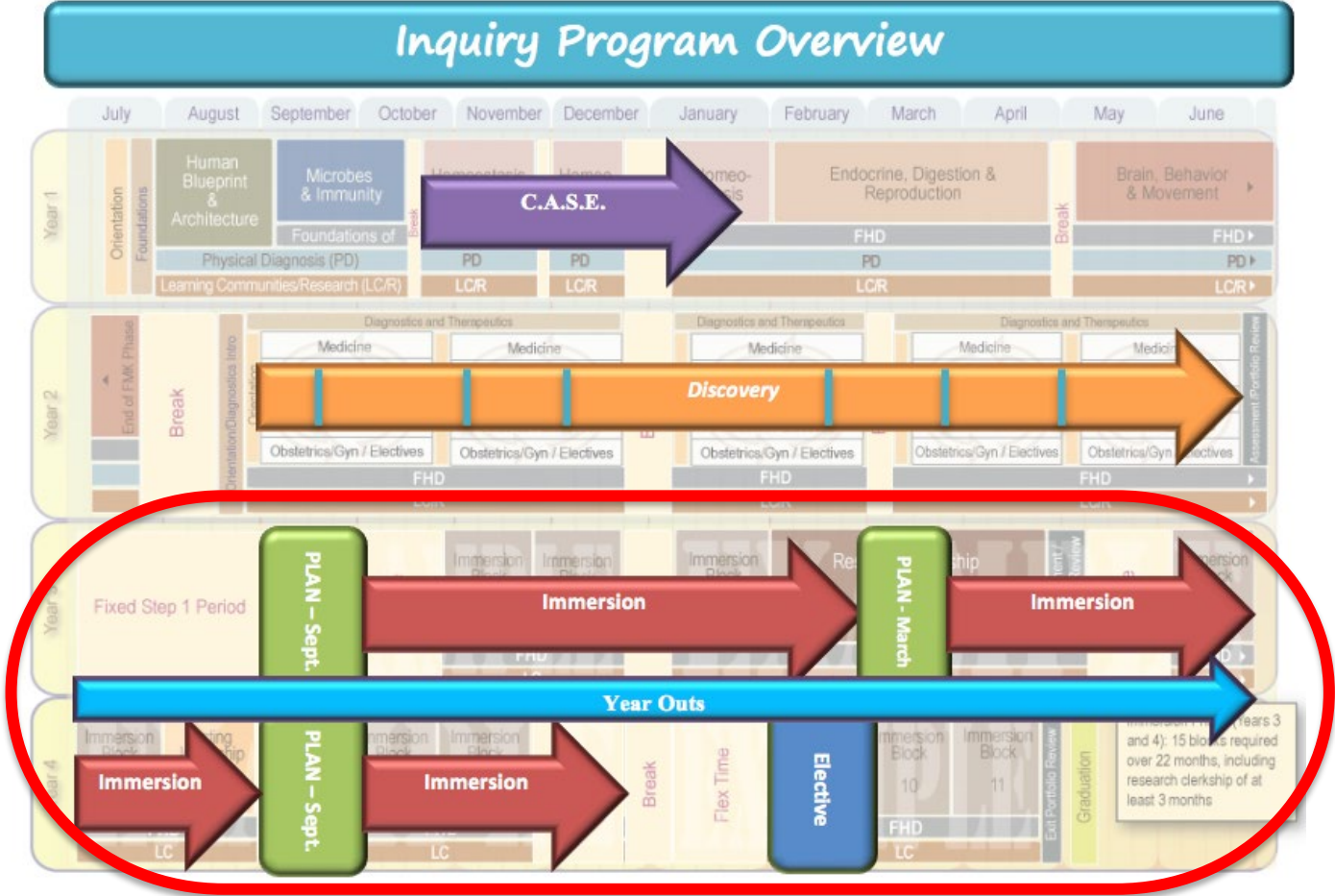
\* No more than two clinical aways for graduation credit

<sup>#</sup>At least one must be clinical rotation



# Inquiry Program

# Inquiry Program: Courses During the Immersion Phase





# Inquiry Program: **PLAN**

- September *or* March, Tuesdays, 1pm – 5pm
- Developing a Research Project Plan
  - Work with SGF during class
  - Work with mentors outside of class
    - **Set up your meetings before you leave for STEP studying in July/August of Y3**
  - **WE** register you for PLAN
  - **YOU** Register for **RI months**



# Inquiry Program: Research Immersion

- Implement a Mentored Research Project
- Full time, immersive experience
- Expected to be in Nashville
- 3 – 6 blocks
- 2 OMSR meetings per block
- 1(+) Area meeting per block
- 1 RD 1-1 meeting per block





# Inquiry Program:



## Important Dates:

May 8 – Research Immersion Planning Form  
June 5 – IRB or IACUC Approval (P2P6)

## FYI:

*The Office* will register you in **PLAN**

**You** will register for your **RI** blocks\*



## C 2.0 Immersion Phase Requirements

### Impact of Increasing Research Months

**To extend research beyond 3 months:**

*Student must be in good academic standing and complete an approval process*

**4 months:** Additional research month fulfills one competency/interest-driven rotation

**5 months:** Additional research month fulfills one competency/interest-driven rotation

**6 months:** Additional research months fulfill two competency/interest-driven rotations and requires the use of one flex month





# Inquiry Program:

**QUESTIONS?**

[vms.research@vanderbilt.edu](mailto:vms.research@vanderbilt.edu)

4<sup>th</sup> floor EBL



School *of* Medicine



# Learning Communities



# Learning Communities

- Meets throughout the Immersion Phase
- 8 LC units over 22-month phase
- Flipped Classroom Structure
  - Pre-session learning modules
  - In-person context talk & college-based discussion groups
- Continued focus on
  - Learning from and with your peers
  - Building community
  - Professional Identity Formation





# Learning Communities

- 1) Managing Medical Error
- 2) Lifelong Learning
- 3) Situational Leadership & Followership
- 4) Change Management
- 5) Priority Setting
- 6) Sustaining Well-being in Medicine
- 7) Managing Ambiguity
- 8) Our Social Mission in Medicine





# Learning Communities

- Preparation/Participation
  - 6 hours effort per unit (including face-to-face time)
- **Face-to-face** meeting
  - usually the **3<sup>rd</sup> Monday**
  - 1-3pm and 3-5pm
- Pass/Fail based on preparation/participation
- May not enroll during: AI, Away, Fixed 4<sup>th</sup> Yr December Flex
- Months offered:

Sept: Units 1&2

Jan: Units 1&2

Oct: Units 3&4

Feb: Units 3&4

Nov: Units 5&6

Mar: Units 5&6

Dec: Units 7&8

Apr: Units 7&8





# Timing of LC sessions

- September block 2023 → Monday 9/11/23
- October block 2023 → Monday 10/9/23
- November block 2023 → Monday 11/6/23
- December block 2023 → Monday 12/4/23
- **January block 2024 → Monday 1/22/24**
- February block 2024 → Monday 2/12/24
- March block 2024 → Monday 3/18/24
- April block 2024 → Monday 4/15/24





# LC Questions

Please email

[elizabeth.a.yakes@Vanderbilt.edu](mailto:elizabeth.a.yakes@Vanderbilt.edu)

and

[LC@Vanderbilt.edu](mailto:LC@Vanderbilt.edu)

# Foundations of Health Care Delivery (FHD) Immersion Phase— Years III & IV





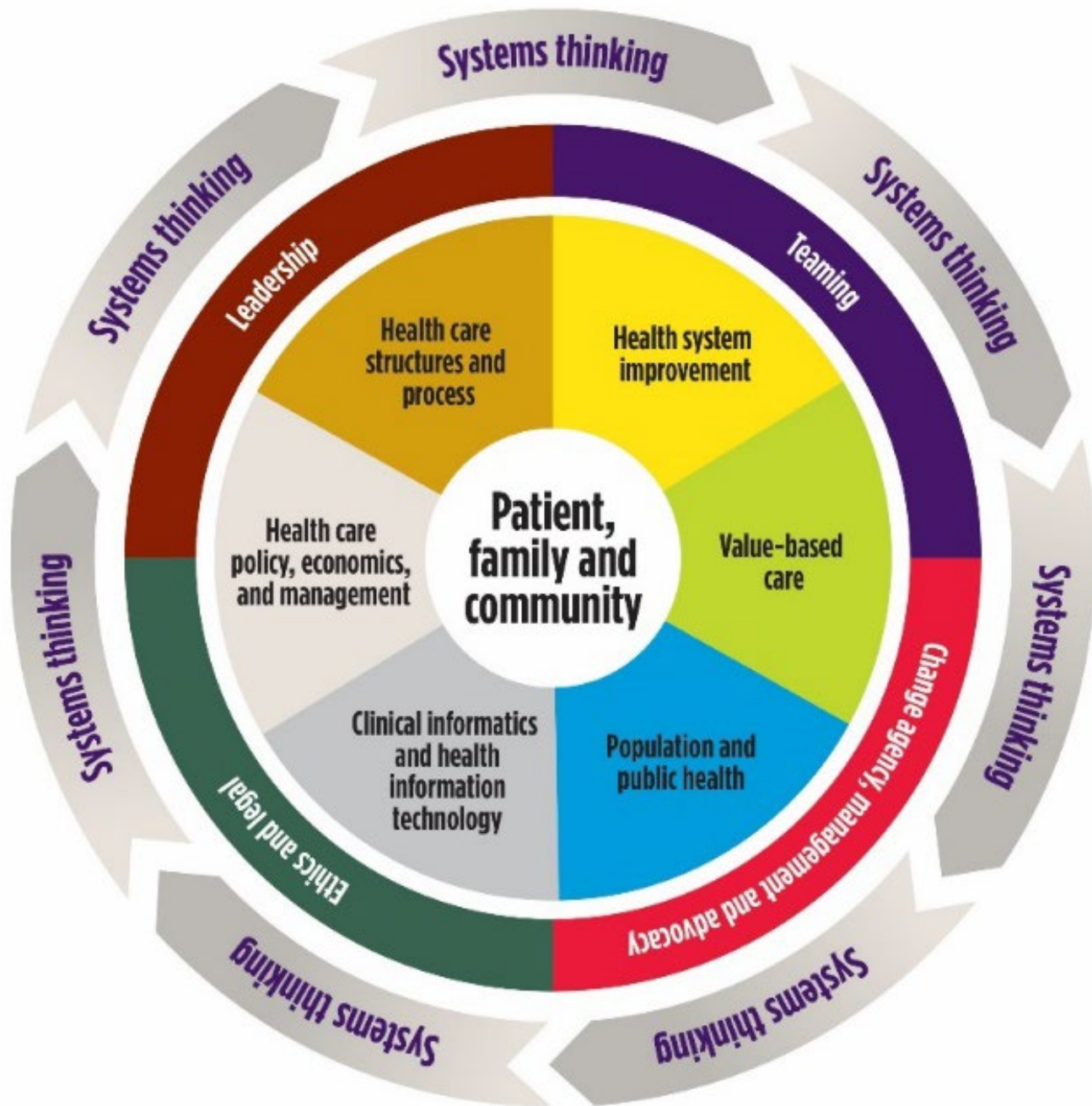


# FHD Course Goals

FHD is a longitudinal course that aims to prepare health care professionals to:

- Understand and apply **health systems science** to patient care.
- Develop skills needed to provide care that is **safe, timely, effective, efficient, equitable and patient-centered.**
- Maintain cultural humility while promoting **diversity, patient autonomy, and healthcare equity.**
- Contribute to patient care and **quality improvement** efforts as members of **interprofessional care teams** within the health care delivery system.







Year 1

## Getting to Know the Clinic

Health Systems Science  
Patient-Centered & Team-Based Care  
Medication Safety  
Health Equity  
Insurance, Medicare, Medicaid  
Patient Education & Health Coaching  
Social Determinants of Health



Year 2

## Getting to Know the Hospital

Patient Safety  
Literacy, Numeracy, Medical Translation  
Transitions of Care  
High Value Care  
Settings of Care  
Health Equity II  
Healthcare Financing  
Measuring Health System Performance



Years  
3/4

## Working & Communicating in Teams

Interprofessional Education and  
Team Building  
Advanced Communication Skills  
Quality Improvement  
Public Health and Prevention



Years  
3/4

## Improving the Health Care System

Patient Safety  
Healthcare Policy  
Healthcare Economics





# FHD Immersion Courses – 10 units

1. Public Health & Prevention (PHP)
2. Advanced Communication (AC):
  - AC1: Overcoming barriers & personalizing communication
  - AC2: Skills for disclosure & professionalism
3. Interprofessional Education (IPE):
  - IPE1: The professions
  - IPE2: Team-based care
4. Patient Safety (PS)
5. Quality Improvement (QI 1-3)
6. Health Care Policy & Economics (HCPE)



1

**Advanced Communications 1 and Public Health and Prevention**  
(Intro to Immersion Phase week)

2

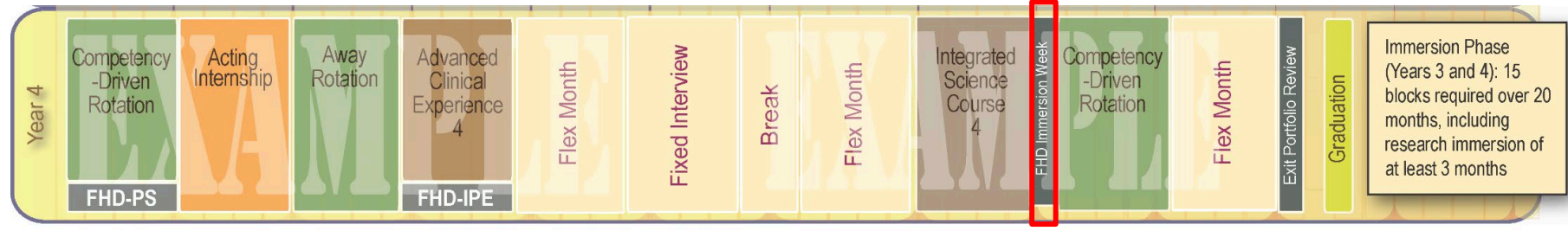
**Advanced Communications 2 and Interprofessional Education 1**  
(3<sup>rd</sup> year spring FHD Immersion)



**5 of the FHD units are completed during week-long FHD Immersions – you will be auto-registered**

3

**Health Care Policy and Economics**  
(4<sup>th</sup> year winter FHD Immersion)



# FHD Immersion Course Information

5 units are completed longitudinally, mostly during 3<sup>rd</sup> year

- Paired with a primary rotation
- Tuesdays from 1-5 pm
- 20 hours effort per unit
- Primarily self-directed, asynchronous learning
  - Patient Safety and IPE have CELA requirements
  - QI courses – all meetings are virtual
- You are responsible for self-registering:
  - Order of courses does not matter EXCEPT in QI
  - Can only take ONE FHD unit each block
- **One or two face-to-face meetings (varies by course)**





1

**Advanced Communications 1 and Public Health and Prevention**

2

**Advanced Communications 2 and Interprofessional Education 1**  
(3<sup>rd</sup> year spring FHD Immersion)

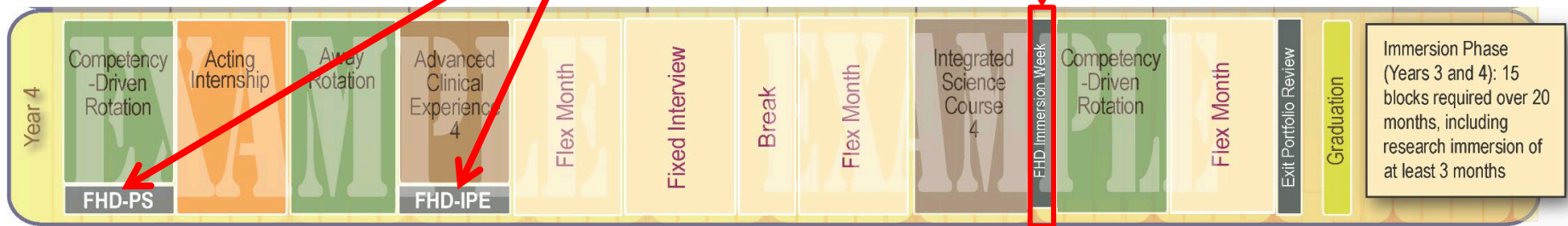


4

**QI 1-3 & PS longitudinally during phase IPE2 fulfilled either via one month longitudinal or other approved experience\***

3

**Healthcare Economics and Policy**  
(4<sup>th</sup> year winter FHD Immersion)



Immersion Phase (Years 3 and 4): 15 blocks required over 20 months, including research immersion of at least 3 months

\*Such as Nicaragua, Shade Tree elective, VPIL, or other approved interprofessional experience

# FHD Immersion Course Offerings

## AY 22-23 Immersion Phase

*Time reserved for FHD: Immersion Phase is Tuesday afternoons, 1-5p*

Course	IDIS		Section 7	Section 8	Section 9	Section 10	Section 11	Section 12	Section 1	Section 2	Section 3	Section 4	Section 5	Section 6
Immersion Weeks	5741(I) 5743(II) 5744(III)			VMS3: 5741* (6/28,6/29;8/30) AC1/PHP						VMS4: 5744 (1/31-2/4) HCPE			VMS3: 5743 (5/2-5/6) AC2/IPE1	
Course	IDIS	Tuesday Face-to-Face Sessions												
IPE2**	5722	4th Tuesday 1-5p		X				X	X					X
QI	5716 (Longitudinal Course)													
QI1	5751	1st Tuesday 1-2p	X						X					
QI2	5752	1st Tuesday 2-3p	X						X					
QI3***	5753	4th Tuesday from 1-3p	X						X					
PS	5714	1st & 4th Tuesdays 3-4p	X						X					

Course Offered
Course Not Offered



# FHD Immersion Course Specifics

- Pass/Fail Grading (except QI)
- All FHD Immersion Weeks have **mandatory in-person** attendance.
  - PHP/AC1: August 22-25, 2023 (Imm Orientation on Monday)
  - IPE1/AC2: April 29-May 3, 2024
  - HCE&P: February 2025 (Dates TBD)
- Can fulfill IPE2 requirement via approved experience: Global Health Nicaragua, Shade Tree, VPIL

*\*\* IPE and Patient Safety content covered on Step 2 exam\*\**

# QI Courses

- Grading: Honors/High Pass/Pass/Fail
- **QI 1-3 via three 1-month longitudinal units**

**You must have QI1-3 completed  
prior to Block 11 (November)  
prior to graduation**

- QI Symposium in February 2022 featuring your projects!



# What do I need to do?

- Attend the 3 longitudinal weeks
- Schedule IPE2, PS, and QI1-3 during your immersion phase before November of your last year
- Blocks can be taken concurrent with most courses (but not PLAN)



# FHD Immersion Course Information

<https://medschool.vanderbilt.edu/fhd/foundations-of-health-care-delivery-immersion-phase/curriculum/>

Lots of additional information on our website:

- Immersion course prerequisites and pairing suggestions
- Dual degree equivalencies for MBA/MPH students
- Links to all syllabi
- Wiki of QI projects
- Course policy details (add/drop, group work, etc.)

# FHD Immersion Website – MD Gateway

## Foundations of Health Care Delivery (FHD)

### FHD 1 & 2

- ◉ [FHD1 Course Syllabus](#)
- ◉ [FHD1 Calendar](#)
- ◉ [FHD2: Course Syllabus](#)
- ◉ [FHD2: Calendar](#)

### FHD Immersion

- ◉ [Calendar Overview AY21-22](#)
- ◉ [Longitudinal Course Offerings AY21-22](#)
- ◉ Syllabi
  - ◉ [IPE2](#)
  - ◉ [Patient Safety](#)
- ◉ [Dual Degree Equivalencies for MBA and MPH \(updated 6/18/20\)](#)

*\*If previous syllabi/calendars are needed, email [fhd@vanderbilt.edu](mailto:fhd@vanderbilt.edu).*

### FHD Quality Improvement (QI)

- ◉ [Welcome to Quality Improvement](#)
- ◉ [QI Master Syllabus](#)
- ◉ [QI Medical Student Survival Guide](#)
- ◉ [QI Final Student Projects \(updated 7/2/21\)](#)

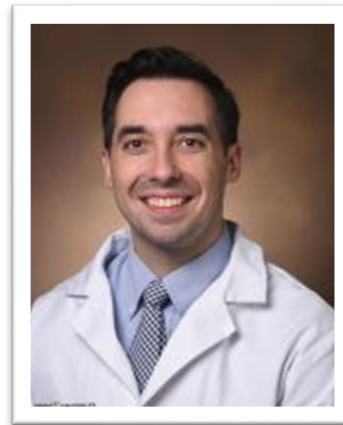
# Course Directors



**Heather Ridinger, M.D., M.H.P.E**  
Assistant Professor of  
Internal Medicine



**Kurt Smith, M.D.**  
Associate Professor of  
Emergency Medicine



**Ryan Buckley, M.D.**  
Assistant Professor, Clinical  
Medicine



**John Graves, PhD**  
Associate Professor of  
Health Policy  
Dept. of Health Policy

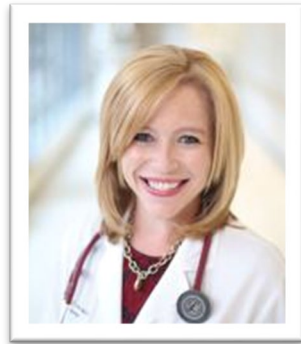
[fhd@vanderbilt.edu](mailto:fhd@vanderbilt.edu)

# Block Directors

## Quality Improvement and Patient Safety

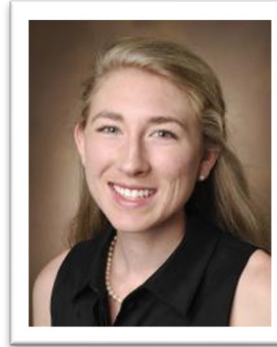


**Brian Bales, MD, DTMH**  
Assistant Professor of  
Emergency Medicine



**Martha Presley, JD, MD**  
Assistant Professor of  
Clinical Medicine

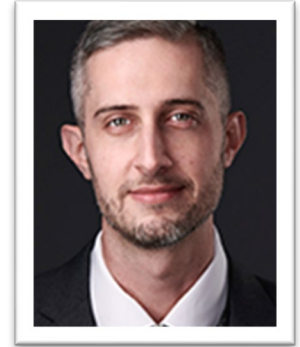
## FHD Immersion Weeks



**Rachel Apple, MD, MPH**  
Assistant Professor of  
Medicine and Pediatrics



**David Stevenson, PhD**  
Professor, Health Policy

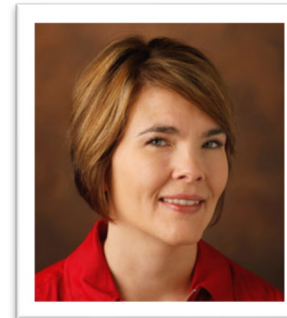


**Kevin Griffith, PhD**  
Assistant Professor  
Health Policy

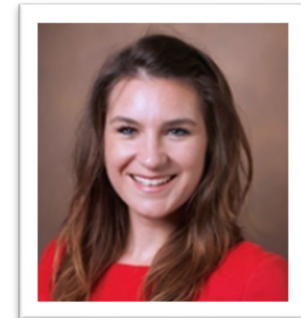
## Center for Patient and Professional Advocacy

VANDERBILT  UNIVERSITY  
MEDICAL CENTER

## Interprofessional Education



**Natasha McClure, FNP**  
Pediatric Nurse Practitioner  
Instructor, Vanderbilt School  
of Nursing



**Natalie McCall, MD**  
Assistant Professor of  
Medicine

# Administrative Staff



**Program Manager**

Jared Austin



**Program Coordinator**

Lia Nagge

Eskind Biomedical Library (EBL) – 4<sup>th</sup> Floor

[fhd@vanderbilt.edu](mailto:fhd@vanderbilt.edu)



School of Medicine



# C2.0 Longitudinal Requirements Summary

Longitudinal Course Requirements				
Foundations of Health Care Delivery—10 units		Learning Communities—8 units	Research—3 months	
5 taken as 4-week courses (self-enroll)	5 units completed during week-long Immersion Weeks	All taken as 4 week-courses (self-enroll)	PLAN Required	3-6 block Research Immersion

# Careers in Medicine

<https://medschool.vanderbilt.edu/md-gateway/pathway-to-match/>

## Pathway to Match

---

### Timeline

#### September – December

- Begin the immersion phase of the curriculum. Use this time to continue exploring career opportunities and spending time in areas of interest.
- Start thinking about dual degree and year-out programs.

#### January – March

- Select faculty advisors and schedule initial and follow-up visits with them.

#### April

- Write [curriculum vitae \(CV\)](#) and begin working on [personal statement](#).

#### May

- Send your college mentor your CV and personal statement via email for review prior to your [MSPE](#) appointment.
- Arrange MSPE interview with the Associate Dean for Medical Student Affairs - do this early and have CV and personal statement ready by time of interview.
- Upload your "Noteworthy Characteristics" to the MSPE online system no later than 2 weeks prior to your MSPE appointment.
- Begin gathering residency information.
- [Military match](#) – check deadlines, even if applying for deferments.



# VMS2 Registration Timeline

You are here



Meet with your Coach (3/13-3/29)

Feb March April May June July Aug Sept

2/13 3/8 3/23 3/27 4/3 4/10 4/19 8/21-25



Elective Counseling: Planning Your Imm Phase Reg & ISC Fair at 5p

Registration reopens for ALL April 19 at midnight



Immersion Phase 2023-24 begins



Rising VMS3 Elective Counseling: Imm Phase Intro

How to Register March 23 at 5 pm

Registration opens for rising VMS3 April 10 at 6 pm

Registration opens for rising VMS4 April 3 at 6 pm

Immersion Phase Orientation and FHD AC1 & PHP for VMS3

Registration opens for rising VMS4 MSTPs March 27 at 6 pm



Opportunities for course/elective counseling



School of Medicine

# Questions?

Please direct questions related to the overall phase to:

[Immersion.Phase@Vanderbilt.Edu](mailto:Immersion.Phase@Vanderbilt.Edu)

Research: [vms.research@vanderbilt.edu](mailto:vms.research@vanderbilt.edu)

FHD: [fhd@vanderbilt.edu](mailto:fhd@vanderbilt.edu)

LC: [LC@vanderbilt.edu](mailto:LC@vanderbilt.edu)

